



GRIFFIOEN HOME  
WELCOME ON BOARD

MIFI:  
GRIFFIOEN\_HOME  
Marinhome1  
Harbor Masterr: 00 32 474 46 27 98



Westhoek Marina  
Marinhome Houseboats



### **ICE**

Doctor : 00 32 112

Police: 00 32 101

Fire: 00 32 112

General : 00 32 112

Farmacie : apotheek.be

Doctor on duty : 00 32 1733 , hij.be

### **RECEPTION:**

Harbor Master

Brugsevaart 48, 8620 Nieuwpoort

00 32 474 46 27 98

Reception for the houseboats, key pickup and drop off  
(closed on wednesday)

### **GARBAGE**

Near Neptunus, code 8622

DONOT LEAVE ANY WASTE BEHIND

### **BREAD AND PATISSERIE**

SNAUWAERT

leperstraat 7, 8620 Nieuwpoort

00 32 58 23 34 45

### **TOERISM:**

consult VISIT-NIEUWPOORT.BE for:

culture and heritage

nature

walking routes

cycling routes

.....

info also available at the Neptunus reception

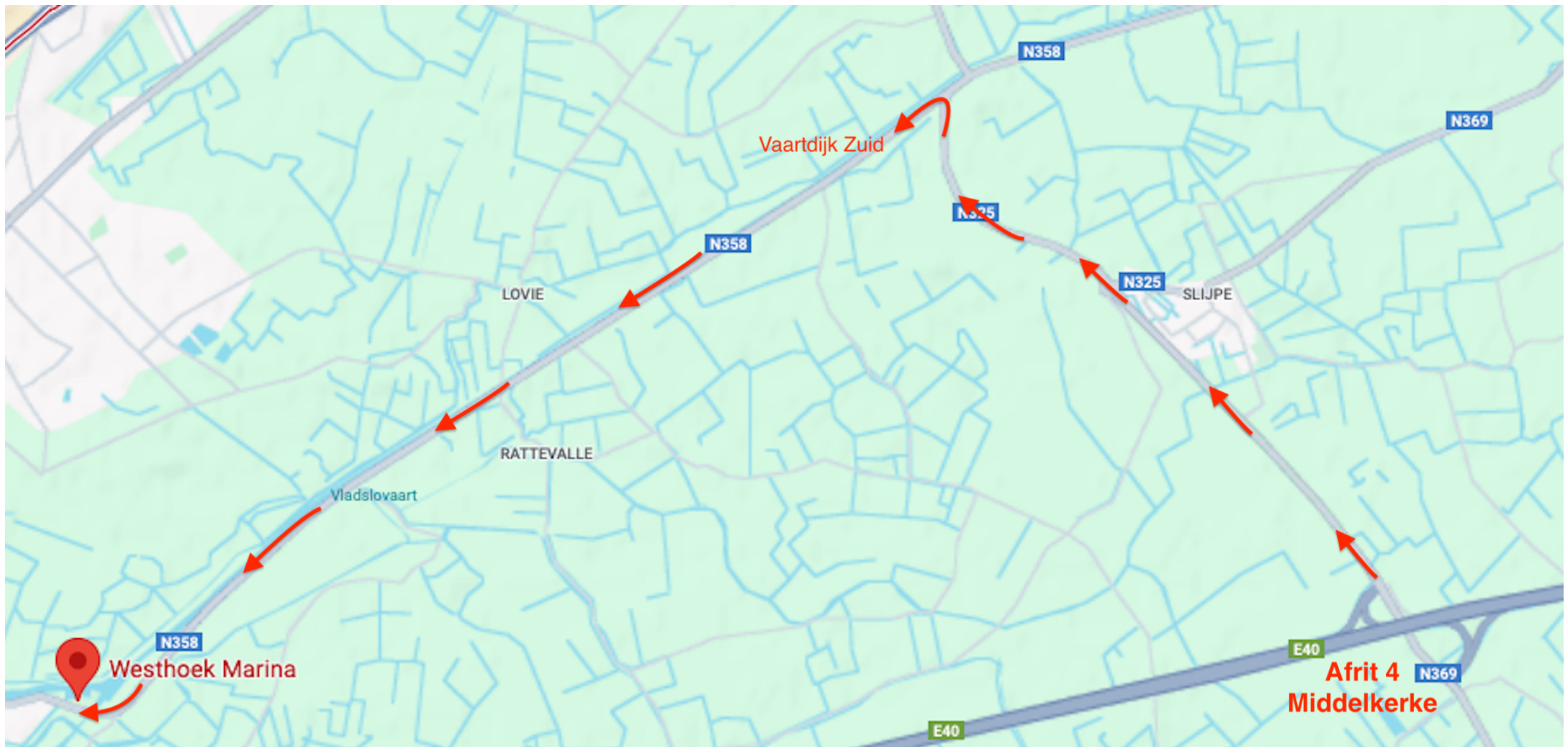
### **SHOPPING:**

Carrefour

Kaai 20, Nieuwpoort

### **MUSSELS AND CRUSTACEANS:**

Plenty of fish shops in the vicinity.



On the E40 motorway from Jabbeke to Calais, take exit 4, direction A18-E40 Middelkerke. Turn left at the canal (N358). Follow the canal. Over the bridge to the left : Westhoek Marina. The harbor master's office is on the side of the building.

**CHECKIN:** Preferably between 3pm. and 5 p.m. Brugsevaart 48, 8620 Nieuwpoort. Harbor master: 00 32 474 46 27 98. You have announced your arrival but the harbor master is not there? Don't worry, the barrier will be open and you can enter the boat with the app on your phone or with the digital key in the key box of the boat.



After receiving your keys, return the same way. As soon as you reach the bottom after the bridge, take a 180° field road back.

**PARKING.**

Parking is free in front of the Griffioen Home.  
Drive the car to the first footbridge. Welcome aboard





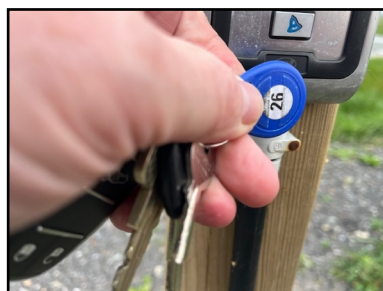
**KEYS.**

Upon arrival you will receive a white clicker in a black cover for the boat and a blue one for the barrier from the harbor master.



**BARRIER.**

After receiving your keys, return the same way. As soon as you reach the bottom after the bridge, take a 180° field road back. You open the barrier with the blue badge. The Tiny is the last houseboat in the discreet row of eight.



The Griffioen Home is licensed by logies vlaanderen under the number 398046.



NL

Wenst u meer informatie over de regelgeving rond toeristische logies? Of wil u een klacht indienen tegen dit logies? Neem dan contact op met Toerisme Vlaanderen.

FR

Si vous désirez de plus amples informations sur la réglementation relative à l'hébergement touristique ou si vous désirez déposer une plainte au sujet de cet hébergement, veuillez contacter VISITFLANDERS.

DE

Falls Sie weitere Auskünfte zu den Vorschriften im Bereich der touristischen Unterkünfte wünschen oder falls Sie Beschwerde gegen diese Unterkunft einlegen möchten, kontaktieren Sie bitte VISITFLANDERS.

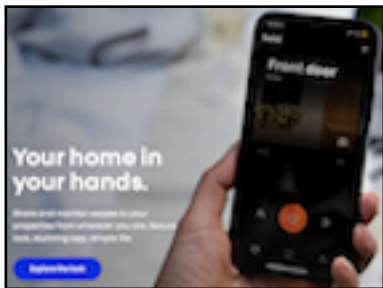
EN

For more information on the regulation regarding tourist accommodation or if you wish to lodge a complaint about this accommodation, please contact VISITFLANDERS.

TOERISMEVLAANDEREN VISITFLANDERS

Grasmarkt 61 - 1000 Brussels - Belgium  
+32 2 504 04 00

[logies@toerismevlaanderen.be](mailto:logies@toerismevlaanderen.be)  
[www.toerismevlaanderen.be/logiesdecreet](http://www.toerismevlaanderen.be/logiesdecreet)




### **BOLD APP**

We will send you an app to install on your smartphone before your departure.

Rather not have an app? Then use the clicker.



### **BOLD CLICKER**

Point the clicker to the doorknob.  
Click :  You will see a green light.  
The knob will be active after 2 seconds.  
The door will not open automatically. You have to turn the knob fully to the right within 20 seconds to open.



### **LEAVING THE GRIFFIOEN HOME.**

Open the entrance door (back terrace).  
Click on the green button.  
Go outside and close the door behind you. Within 20 seconds, turn the outside knob fully to the left. This way the door is in double lock.



### **KEY BOX**

Locked yourself out? No worries.  
The key box holds the key to the front terrace.  
We will give you the code before departure.  
Don't forget to put the key back.



### **MIFI INTERNET**

GRIFFIOEN\_HOME  
pasw: Marinhome1

No coverage? Briefly switch the mifi off and on again.

### **FRONT TERRACE DOOR**

Open and close with the rotary knob.  
Remember to close when you go out and at the end of your stay aboard the Griffioen Home.



### **DOOR TERRACE AT THE BACK.**

Do not leave the door open in wind or rain. The stores may be damaged.  
The inside control knob is not water-resistant.



### **PLEATED CURTAINS.**

There are a lot of glass windows all around. In summer it can be very hot. In that case, shield the windows where the sun shines on with the pleated curtains.



### **PROSIT.**

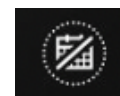
Enjoy the drinks in the fridge. As well as the Nespresso.



### **THERMOSTAT**

Regulate your indoor temperature yourself.

Press :



Control with + and - .  
Do not set the temperature too high when leaving or with open outside door.







### DE SEDE SEAT

ENJOY THE COMFORT OF YOUR DE SEDE SEAT.

But do not sit on the food rests.



### SET YOUR TABLE HEIGHT



1 = dining table height  
2 = work table height (protect the wood with the plastic tablecloth.)  
Only use positions 1 and 2.



### POWER STATION XTORM 500W

(In technical room). With the power station you will never completely run out of electricity.



Druk op de knop van de uitgang die u wilt gebruiken.  
Voor USB/DC-uitgang : druk 1sec.  
Voor AC-uitgang: druk 2 sec.  
Het groene Impje gaat branden.  
Zet de uitgang uit wanneer u deze niet meer gebruikt.

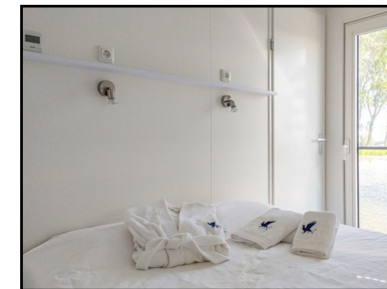
### ZONNEPANEEL VOOR XTORM 500W



Laad het station weer op, liefst met het zonnepaneel.

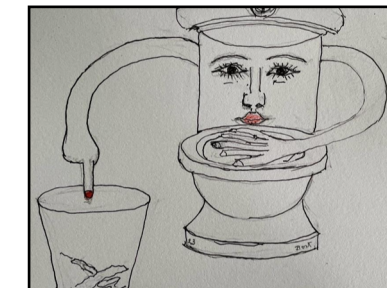
### BED LINEN AND TOWELS.

The comfortable double hotel bed is 1m60 wide.  
The bed is made up on your arrival. Boat maintenance and use of bed and bath linen are compulsory at a flat rate of 110€, to be paid to the harbourmaster.



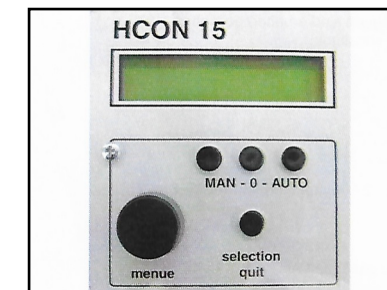
### BOAT TOILET.

The toilet has a sensitive motor. Throw in only toilet paper. No wet wipes.



### HOMA PUMP.

The HOMA pumps the water away. This may fail very exceptionally. Press AUTO to restart.



### BICYCLE PARKING.

Ashore is a white container on shore. In it you can safely park your bikes : (not yet applicable).



### PETANQUE COURSE.

Ashore, close to the Griffioen Home, you can enjoy a game of Petanque. There are balls in the technical room. (Coming soon).





## SMARTTV SAMSUNG THE SERO



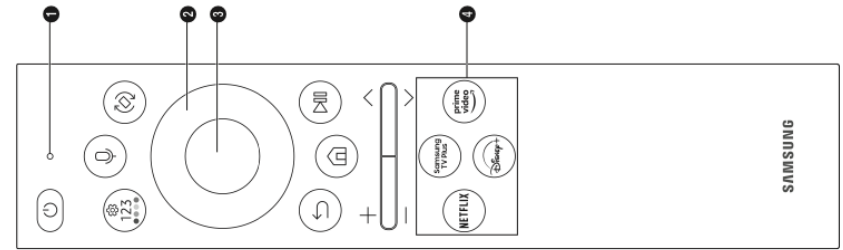
Do not touch the screen to rotate or move it. Use the remote control.



## SMARTTV TV VLAANDEREN

With TV VLAANDEREN you watch Dutch, French and some English-language channels. Other channels you watch via internet. Ask your TV provider for an app.

## SMARTTV TV VLAANDEREN CHANNELS.



Button	Description
(Power)	Press to turn the TV on or off. <ul style="list-style-type: none"> <li>Select whether to switch the TV to Landscape Mode or Portrait Mode before turning off or to turn off the TV without changing the orientation. To change to the desired setting, navigate to <b>Power Off Mode</b> (🏠) &gt; <b>Menu</b> &gt; <b>Settings</b> &gt; <b>All Settings</b> &gt; <b>General &amp; Privacy</b> &gt; <b>Power and Energy Saving</b> &gt; <b>Power Off Mode</b> and change the setting.</li> </ul>
MIC / LED	Used as MIC when using voice recognition with the remote control. <ul style="list-style-type: none"> <li>Do not impact the MIC hole or use a sharp object to poke into the hole.</li> </ul>
(Voice Assistant)	Runs Voice Assistant. Press and hold the button, say a command, and then release the button to run Voice Assistant. <ul style="list-style-type: none"> <li>The supported Voice Assistant's languages and features may differ by geographical area.</li> </ul>
(Settings / Number / Colour button)	Each time you press this button, Settings menu / virtual numeric pad / Option pad with Colour buttons are displayed alternately. <ul style="list-style-type: none"> <li>Use this button to access additional options that are specific to the feature in use.</li> <li>Press to bring up the virtual numeric pad on the screen. Use the numeric keypad to enter numeric values. Select numbers and then select <b>Done</b> or <b>Enter Number</b> to enter a numeric value. Use to change the channel, enter a PIN, enter a ZIP code, etc.</li> <li>When pressed for 1 second or more, the <b>Shortcuts</b> menu screen appears.</li> </ul>
(Rotate)	Press the button to rotate the screen to <b>Landscape Mode</b> or <b>Portrait Mode</b> .
Directional button (up, down, left, right)	Moves the focus and changes the values seen on the TV's menu.
Select	Selects or runs a focused item. When pressed while you are watching a broadcast programme, detailed programme information appears.
(Return)	Press to return to the previous menu. When pressed for 1 second or more, the running function is terminated. When pressed while you are watching a programme, the previous channel appears.
(Smart Hub)	Press to switch to the Media Home. From the Ambient Mode screen, press to switch to the Ambient Mode Home.
(Play/pause)	When pressed, the playback controls appear. Using these controls, you can control the media content that is playing. <ul style="list-style-type: none"> <li>To use Game Bar, press and hold the button in <b>Game Mode</b>.</li> <li>Game Bar may not be supported depending on the model or geographical area.</li> </ul>
+ / - (Volume)	Move the button up or down to adjust the volume. To mute the sound, press the button. When pressed for 2 seconds or more, the <b>Accessibility Shortcuts</b> appears.
^ / v (Channel)	Move the button up or down to change the channel. To see the <b>Guide</b> screen, press the button. <ul style="list-style-type: none"> <li>When pressed for 1 second or more, the <b>Channel List</b> screen appears.</li> </ul>
Launch app button	Press each button to run its function. <ul style="list-style-type: none"> <li>Available apps may differ depending on the geographical area or contents provider.</li> </ul>
(Pairing)	If the Samsung Smart Remote does not pair to the TV automatically, point it at the front of the TV, and then press and hold the  and  buttons simultaneously for 3 seconds or more.

- Use the Samsung Smart Remote less than 6 m from the TV. The usable distance may vary with the wireless environmental conditions.
- The images, buttons, and functions of the Samsung Smart Remote may differ with the model or geographical area.
- The Universal Remote function operates normally only when you use the Samsung Smart Remote that comes with the TV.
- It is recommended to use an original Samsung charger. Otherwise, it may cause performance degradation or failure of the product. In this case, the warranty service is not applicable.
- When the remote control does not work due to low battery, charge it by using the USB-C type port.
- When some apps are launched in **Portrait Mode**, their mode can be switched to Landscape depending on the app's policy.





**HOOVER.**

Your boat will be cleaned for you before and after your stay. Do you like to clean it yourself in between? There is a hoover in the technical room.



**HAIRDRYER.**

Don't like your hair in the wind? Use the Babyliss to neatly style your hair.



**MICRO WAVE - GRILL**

Never turn on the microwave without icontent.



**NESPRESSO**

Light on = Nespressomachine and toaster on.  
The Nespresso machine makes the very



**PLIABLE TROLLEY.**

Getting your luggage to the boat in comfort?  
There is a pliable trolley in the technical area.

**GROUND PLAN - ESCAPE ROUTE - FIRE EXTINGUISHER**

<b>BRANDINSTRUCTIES - CONSIGNES EN CAS D'INCENDIE</b>	
<b>INSTRUCTIONS IN CASE OF FIRE - VERHALTEN IM BRANDFALL</b>	
<b>1.</b>	<p><b>Blijf rustig en bel:</b> Restez calme et appelez le: Stay calm and dial: Ruhe bewahren und Brand melden:</p> <p><b>Geef duidelijke informatie over: plaats en omvang van de brand + aantal slachtoffers</b> <b>Faites clairement mention: de l'endroit et l'importance de l'incendie + nombre de victimes</b> <b>Give clear information about: The place and the extent of the fire + number of victims</b> <b>Genauere Informationen über Feuer (Was), Ort (Wo) und Opfer (Wie viele) geben.</b></p>
<b>2.</b>	<p><b>Blusapparaat. Blus de brandhaard.</b> Extincteur. Eteignez le foyer d'incendie. Fire extinguisher. Extinguish the fire. Feuerlöscher. Löschversuch unternehmen.</p>
<b>3.</b>	<p><b>Sluit ramen en deuren en verlaat de gevarenzone</b> <b>Fermez les portes et les fenêtres et quittez la zone de danger</b> <b>Close windows and doors and leave the danger zone</b> <b>Fenster und Türen schließen und die Gefahrenzone verlassen</b></p>
<b>4.</b>	<p><b>Bij versperring van de normale vluchtweg, gebruik de tweede evacuatieweg. Doe desgevallend de reddingsgordels aan. Maak uw aanwezigheid duidelijk.</b> <b>Si la sortie normale n'est plus accessible, utilisez la 2ème sortie d'évacuation. Mettez vos ceintures de sauvetage si évacuation le long de l'eau. Signalez votre présence de façon claire.</b> <b>If the regular exit cannot be used, use the 2nd evacuation possibility. Put on the lifebeats when evacuating along the water. Make your presence clear.</b> <b>Bei Versperrung des normalen Fluchtwegs, den zweiten Fluchtweg benutzen. Ziehen Sie bei der Evakuierung auf dem Wasser die Schwimmwesten an. Machen Sie sich bemerkbar.</b></p>
<b>5.</b>	<p><b>Blijf ter beschikking van de brandweer om verdere informatie te verschaffen</b> <b>Restez à la disposition des pompiers pour fournir de plus amples informations</b> <b>Stay available for the firemen to give them further information.</b> <b>Stellen Sie sich der Feuerwehr zur Verfügung, um weitere Informationen zu erteilen.</b></p>
<b>6.</b>	<p><b>Verantwoordelijke van de uitbating: Responsable de l'exploitation:</b> <b>Responsible for the exploitation: Für den Betrieb</b></p> <p style="text-align: right;">NOVASOL 0031 137 440 200 LOUIS MORTIER 00 32 475 48 47 03</p>